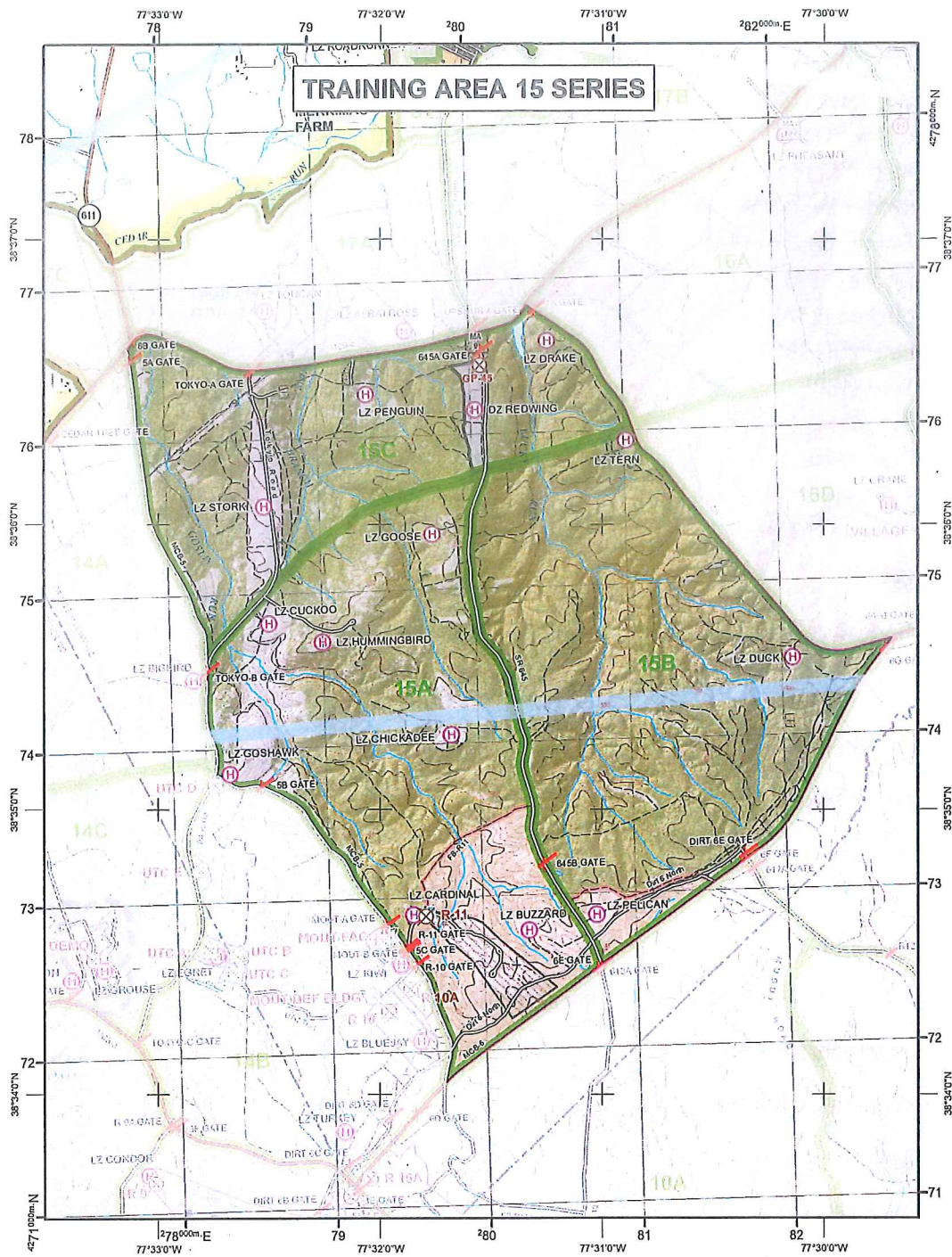


# TA-15 Series



**DESCRIPTION:** Training Area 15 series is 3,414.98 acres designated for units to conduct Non Live Fire events including; Stalking, Convoy ops Patrol ops, and Infantry skills. TA-15 series is broken up into 3 sections; 15A (1,225.61 acres), 15B (1,314.95 acres) and 15C (874.42 acres). TA-15 series contains 2 Live Fire Ranges, 1 Drop Zone, 1 Facility and 13 Landing Zones that support up to Company level training.

# TA-15 Series

## LANDING ZONES:

- LZ Goshawk (15A)
- LZ Cardinal (15A)
- LZ Buzzard (15A)
- LZ Chickadee (15A)
- LZ Hummingbird (15A)
- LZ Goose (15A)
- LZ Cuckoo (15A)
- LZ Pelican (15B)
- LZ Tern (15B)
- LZ Drake (15C)
- LZ Duck (15B)
- LZ Stork (15C)
- LZ Penguin (15C)

## DROP ZONES:

- DZ Redwing

## FACILITIES:

- R-11 Sniper Tower (15A)

## RANGES WITHIN TAs:

- R-11 (15A)
- GP-45 (15C)

## RESTRICTED AREAS:

- Active Live Fire Ranges (down range areas/SDZ's).

## WEAPONS AUTHORIZED:

- All Weapons within Ammunition restriction.

## AMMUNITION:

- BLANKS (ALL)
- SESAMS (ALL)
- PAINTBALL (ALL)
- PYRO- (ALL)
- Riot control agents are prohibited within 500M OF PUBLIC TRAFFIC ROADS AND 1000M OF INSTALLATION BOUNDRIES.

**Pre Inspection:** Units may request a pre inspection to identify any discrepancies throughout the RTA, or items missed on the last Post Inspection.

# TA-15 Series

**Post Inspection:** The OIC will contact the fire desk and schedule a Post Inspection with Location, Time, and Areas to be posted. Post inspection will be conducted after all training events and only during daylight hours by Range Control Personnel. Units must remove all Dunnage, Trash, and Gear.

## Special Instructions:

1. Only weapons and ammunition listed in this SOP will be used on this training area.
2. OIC must be present while Non-Live Fire events are in progress.
3. OIC AND RSO must be present while Live Fire events are in progress.
4. No personnel will train within the Training Area without approved requests and checking in with range control.
5. Facilities, Landing Zones, Drop Zones or Live Fire Ranges, must be reserved individually.
6. Recreational activities are prohibited without specific special authorization from RMB.

## Restrictions:

- Training areas may be closed due to unassociated live fire training events, details of conflicts and restrictions are found in RFMSS. For additional information on scheduled events contact range control scheduling.
- GP-45 conducting live fire training closes TA-15C.
- R-11 Conducting live fire training closes TA-15A.
- UAV's must be within 500m within installation boundaries.

**APPLICABLE MAP SHEET.** All grid coordinates listed in this order apply to the Quantico Military Installation Map V834S Edition 5-NGA 1:25000. DATED: JULY 2019

**INSTALLED COMMUNICATIONS. None**

## KEY LOCATIONS:

## MILITARY GRID REFERENCE

TBS	87106390
Range Control	87506350
ASP	91256605
Fire House 3	89606410

**LASERS AUTHORIZED.** Approved aiming devices mounted on standard approved service weapons (no Class 3B or 4 except for PEQ15 and PEQ16 with filter on).

# TA-15 Series

## **COMMUNICATION REQUIREMENTS:**

1. A radio check is required immediately upon occupying any portion of the RTA, every 30 minutes in a live fire status and every 3 hours in a non-live fire status.
2. The Range Control Facility (RCF) Fire Desk Net Control call sign is "Range Control". Your call sign is "TA-15A", "TA-15B" or "TA-15C".
3. The primary RCF Fire Desk Net Control frequencies are: ELMR talk group "RC Safety" (ground) and 323.7 AM UHF (air).
4. The secondary RCF Fire Desk Net Control is telephone, numbers: 703-784-5321 or 5322.
5. OIC/RSO will monitor the RCF primary and secondary Safety Nets at all times. Instant communication is required.
6. Any unit with organic ELMR radios will have their ELMR radios programed with the "RC Safety" talk group and use those radios as their primary means of communication within the RTA.
7. Units without organic ELMR assets will be issued ELMR radios from RMB upon check-in.
8. Approved Non-ELMR radios are only authorized for internal communication (ground) upon approval from the MCB Quantico Spectrum Manager.
9. If the RCF cannot reach a unit within the RTA via primary communication, the unit will be contacted via the secondary means of communication.
10. Upon loss of primary communication the OIC/RSO will initiate a "check fire"/cease training status and will contact the RCF via secondary communication. This communication will be maintained while primary communication is being restored. Units may only resume firing/training once primary communication has been re-established and clearance is granted by the RCF.

## **INJURY CLASSIFICATIONS:**

Injuries are classified into the following categories in order to aid in casualty evacuation from the RTA.

1. ROUTINE. Routine injuries are those injuries that are not threatening to life, limb or eyesight; and conditions or illnesses treatable by medication or procedures available at the base medical facilities.
2. PRIORITY. Priority injuries are those injuries that require immediate medical attention but are not threatening to life, limb, or eyesight if treated promptly.
3. URGENT. Urgent injuries are severe injuries that are threatening to life, limb, or eyesight and require immediate medical attention.
4. MASS CASUALTY. A mass casualty is a series of injuries with multiple priority and urgent medical patients.

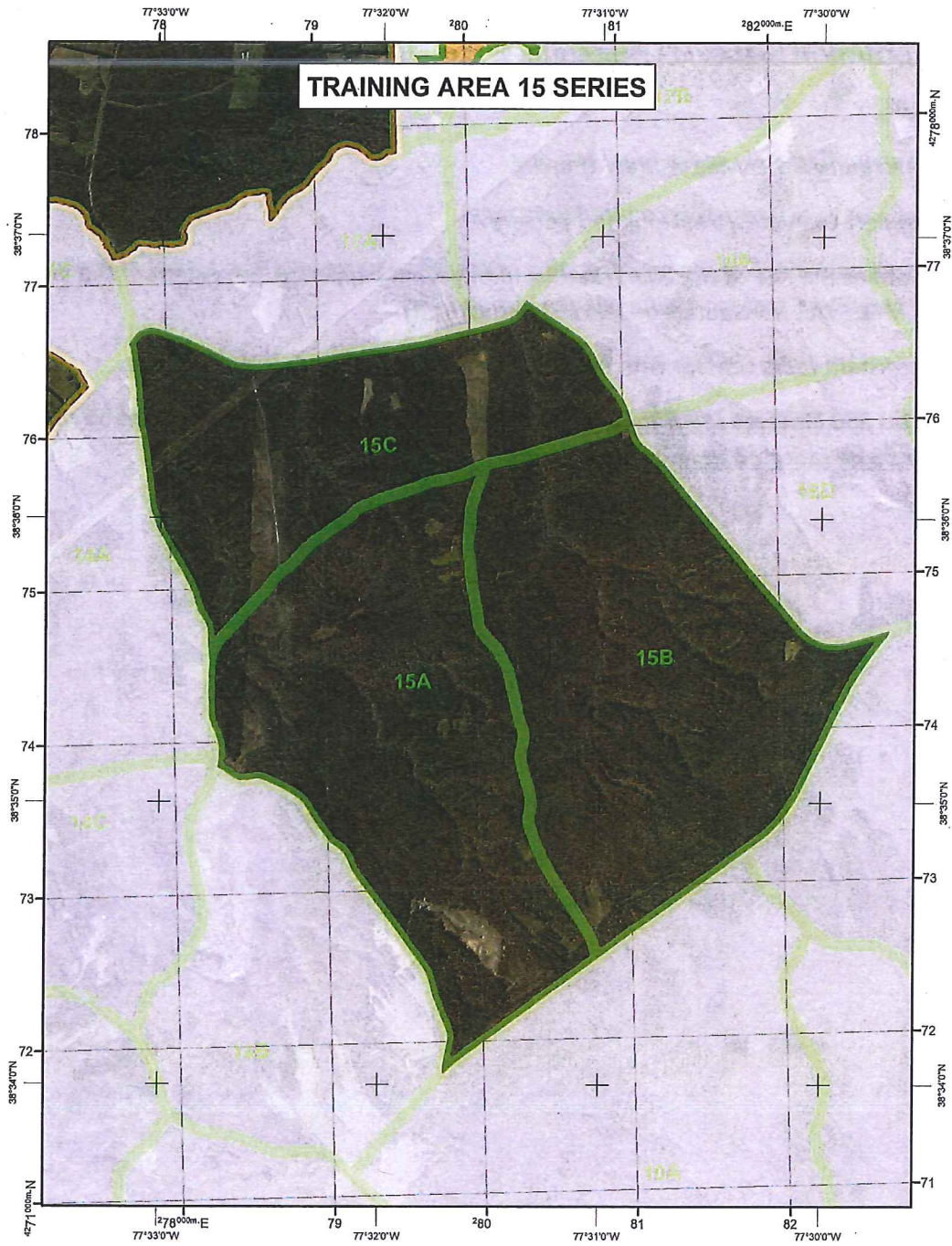
# TA-15 Series

## MEDICAL EVACUATION (MEDEVAC) PROCEDURES:

1. Injury occurs.
2. Training Area immediately cease-fires/ training.
3. Medical support evaluates/treats injured personnel.
4. OIC/RSO notifies the RCF of the injury, stating briefly what happened, the extent of the injury and what type of MEDEVAC transportation needed (ground/air).
5. Maintain constant radio contact with Range Control and await further instructions.

\*Minor injuries and illnesses requiring routine medical services in the field need not be reported to RMB but should be reported in unit training logs.

# TA-15 Series



*[Handwritten Signature]*

Range Control Officer:

Date: 25 FEB 2020